



Hamaton | Innovation to Perfection

TPMS PRODUCT RANGE



ABOUT HAMATON

Hamaton is one of the world's largest manufacturers of tyre valves and tyre pressure monitoring system (TPMS) products for the OE and aftermarket. As the European headquarters of Hamaton Automotive Technology, Hamaton Ltd is a specialist TPMS technical centre and distribution platform for the company's comprehensive product range.

Hamaton places great emphasis on quality, an overriding factor in their success. Hamaton's TPMS sensors are manufactured then tested on a fully-automated, environmentally-controlled production line. This meticulous process and the manufacturing of tyre valves are recognised by TÜV SÜD (a world-leading technical service provider) as Quality Management Systems, which fulfil the requirements of IATF 16949. Therefore, customers can rest assured they will obtain a premium product.



PRODUCT RANGE

Hamaton provides an extensive range of high-quality TPMS products, manufactured in an OE environment to the strictest and most exacting levels of inspection and testing. The TPMS range includes the universal EU-Pro Hybrid 3.5 sensor, OE-R one-to-one replacement sensors and diagnostic tools powered by ATEQ.

Furthermore, Hamaton has the capacity to produce 22 million Snap-In and 3 million Clamp-In tyre valves each month for motorcycles, passenger cars, light/heavy trucks, buses, agricultural vehicles and earthmovers.



NEW!

UNIVERSAL SENSOR

EU-Pro Hybrid 3.5

Configurable and Programmable

Alloy Clamp-In: [HTS-A68BM](#) **Snap-In:** [HTS-A68BA](#)

Black Clamp-In: [HTS-A68BN](#)

The fastest configurable universal sensor in the market boasts higher vehicle coverage besides programmable technology.

- 99% coverage of new European direct TPMS-enabled vehicles plus the opportunity to future-proof stock with programmable protocols.
- Compatible with leading manufacturer's diagnostic tools, such as ATEQ.
- Housing enhanced to accommodate most popular aftermarket Snap-In valve.
- Designed for optimum compatibility with OE and aftermarket wheels.
- Reliable Maxell battery with the latest NXP chipset.
- Only 26g overall; laser-welded rear cover minimises weight.
- Auto-location functionality for LOS, WAL, PAL and SAL.



ONE-TO-ONE REPLACEMENT SENSORS

OE-R

Types: Alloy Clamp-In, Black Clamp-In and Snap-In

OE-R sensors are cost-effective, direct replacements for OE counterparts. They come pre-programmed for the vehicle and are fully functional following the vehicle's standard relearn procedure.

- Designed for optimum compatibility with OE and aftermarket wheels.
- Reliable Maxell battery with the latest NXP chipset.
- Only 26g overall; laser-welded rear cover minimises weight.
- Auto-location functionality for LOS, WAL, PAL and SAL.



*The sensor has a warranty of three years. However, if you remove the tyre, you must replace/service the valve to maintain the warranty.



VALVE OPTIONS FOR HAMATON SENSORS



Alloy Clamp-In Valve:
6-266B



Black Clamp-In Valve:
6-266B-BK



Snap-In Valve:
6-207

Hamaton's EU-Pro Hybrid 3.5 and OE-R sensors have three valve stem options; Alloy Clamp-In, Black Clamp-In and Snap-In to compliment the wheel.

- Clamp-In valves include a handy nut-over-cap feature. Therefore, users can remove/attach the nut while the cap is on, reducing the time it takes to fit a sensor to a wheel.
- Clamp-In valves are anodised to significantly reduce the risk of corrosion from chemicals and road salt during Winter.
- Clamp-In valves include an anti-scratch washer, which enables users to tighten the valve's nut without scratching the alloy wheel's surface.
- Clamp-In and Snap-In valves have nickel-plated valve cores to prevent galvanic corrosion and high-pressure caps with a second sealing ring.



REPLACEMENT PARTS

Hamaton provides the largest selection of replacement parts (valves and service kits) in the market, covering **100% of OE and aftermarket sensors**, which can be ordered in boxes of 10 or as part of the Starter Kit Pro.

Why service a valve?

Valves are subject to damage from chemicals and road salt during Winter besides bearing metal fatigue over time. Figure 1 demonstrates what may happen if valves are not serviced. Therefore, OE manufacturers highly recommend servicing them when the tyre bead is broken to ensure they remain in a suitable condition.

What are the benefits of servicing valves?

Servicing valves uphold the sensor's performance, extending its life and avoiding unnecessary replacement costs, which ultimately:

- Saves money by increasing fuel economy.
- Reduces premature tyre wear.
- Improves vehicle handling and road safety.
- Reduces a vehicle's CO₂ emissions.

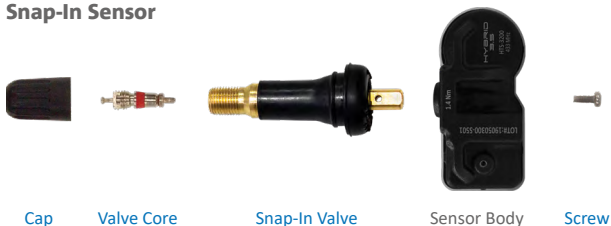
Which parts of the valve require replacing when servicing?

The components that require replacing are highlighted in **blue**:

Clamp-In Sensor

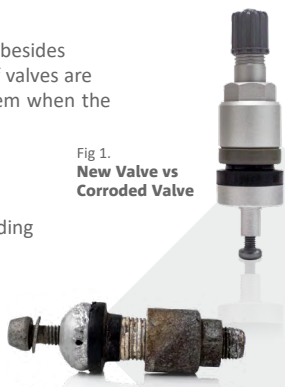


Snap-In Sensor



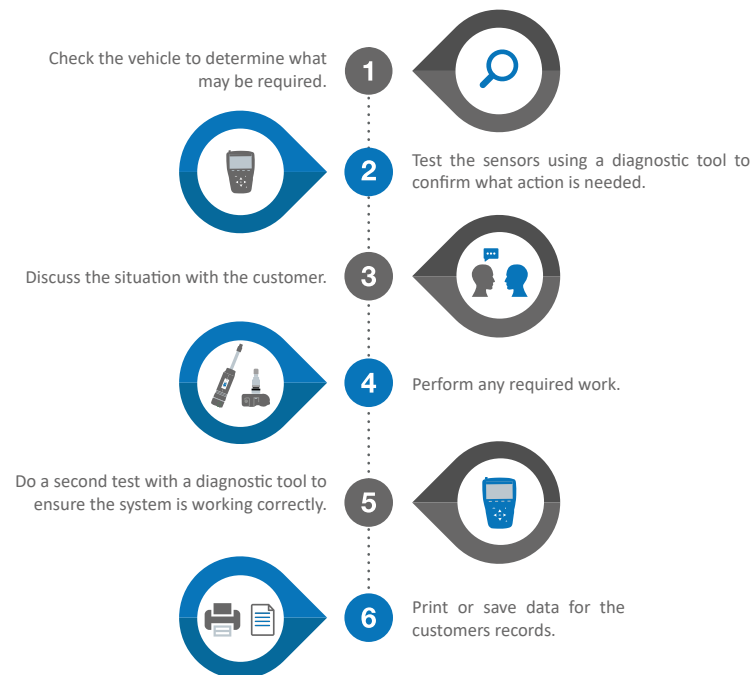
For more information, please contact Hamaton's Technical Support Team via info@hamaton-tpms.com

Fig 1.
New Valve vs Corroded Valve



6-STEP TPMS PROCEDURE

If a customer has an issue with their vehicle's TPMS, Hamaton recommends garages and tyre bays follow this simple 6-step procedure for an effective resolution:



STARTER KIT PRO

Part Code: **6-348**

Hamaton's Starter Kit Pro provides a selection of the most popular replacement parts, which cover 99% of European direct TPMS-enabled vehicles.

With an impressive 52 valves and 12 service kits for OE and aftermarket sensors, the Starter Kit Pro fulfils the TPMS servicing requirements of every garage and tyre bay.

For extra convenience, Hamaton offers the Starter Kit Pro's content in individual boxes of 10.

Find the correct replacement parts online

Hamaton's website is home to a Vehicle Look-Up tool designed to help users identify the correct replacement parts for a vehicle. Just enter its Make, Model and Year to begin.

www.hamaton-tpms.com



DIAGNOSTIC TOOLS

Hamaton's diagnostic tools are manufactured in partnership with global market-leader, ATEQ.

ESSENTIAL TOOLS FOR SERVICING

Hamaton's Tool Kit is an essential piece of equipment for all garages and tyre bays, as valves require specific tools to perform a quick yet effective service operation.

Part Code: [6-313](#)

- All required tools to remove, service and install valves come enclosed in a convenient, durable carry case.
- The tool range is compatible with every valve in the market.
- Overcome varying torque settings among valves and service kits by having the correct tool on hand, reducing the risk of damage.

Contents:

- Calibrated Torque Tool including 7mm, 11mm and 12mm Hex Sockets
- 10, 15 and 20 Torx Bits
- Valve Core Torque Tool
- Grommet Removal Tool



H47

Part Code: [HAM-D065](#)



The most cost-effective diagnostic tool launched by Hamaton to date.

The H47 - exclusively for Hamaton's sensors - packs an abundance of features, including integrated OBDII module into a compact, ergonomic design.

- Provides many simple methods to configure all EU-Pro generations and program Hybrid 3.5 sensors: create, clone, manually enter or (from the vehicle's ECU) retrieve ID's.
- Reads 100% of OE and aftermarket sensors.
- Displays sensor data: ID, tyre pressure, tyre temperature, battery status and frequency.
- Provides manual, auto and OBDII relearn procedures.
- Built-in OBDII module performs ECU reset in under 2 minutes.
- Ever-increasing vehicle coverage due to frequent database updates.
- User-friendly navigation, multi-language interface and bright colour display.
- Comes with shock-resistant rubber boot, USB-B cable, power adapters (EU, UK and US) and carry case.

H36

Part Code: [HAM-D030](#)



Economical and easy-to-use diagnostic tool.

- Quickly configures/programs EU-Pro Hybrid 3.5 sensors and reads 100% of OE and aftermarket sensors.
- Can configure/program all popular universal aftermarket sensors with an upgrade.
- Displays sensor data: ID, tyre pressure, tyre temperature, battery status and frequency.
- Ever-increasing vehicle coverage due to frequent database updates.
- User-friendly navigation and multi-language interface.



H46

Part Code: [HAM-D045](#)



Robust and upgradeable diagnostic tool.

In addition to features of the H36:

- Provides manual and auto relearn procedures.
- OBDII relearn procedures possible with an upgrade.
- TTD (Tyre Tread Depth) function possible with an accessory.
- Bright colour display.



*Five years of free Hamaton-only updates will cease if you upgrade to all popular universal

AVAILABLE ACCESSORIES

Tread Depth Gauge (H46 only)

Part Code: HAM-D027

This compact accessory - enabling easy access to inside the wheel well - quickly captures three precise measurements (inner, centre and outer tyre) of four to seven wheels per vehicle.

Therefore, the Tread Depth Gauge highlights if a tyre has reached the minimum legal limit, which can improve driver safety and enables garages and tyre bays to upsell.

OBDII Module (H46 only)

With H46: HAM-D046 | **Individual:** HAM-D006

The OBDII module is an essential accessory, which facilitates vehicle relearn procedures. Connect the module to the vehicle's OBDII port (the H46 will display its location) then transfer stored sensor data to the vehicle's ECU.



AVAILABLE UPGRADE

All Sensor Upgrade (H36 & H46 only)

For H36: HAM-D050 | **For H46:** HAM-D051

Make your H36/H46 diagnostic tool compatible with all popular universal aftermarket sensors*.



SPECIAL OFFERS

TPMS Bundles, assembled to suit individual needs, are a practical yet cost-efficient way to get your hands on Hamaton's TPMS products. Please contact us for more information.

info@hamaton-tpms.com

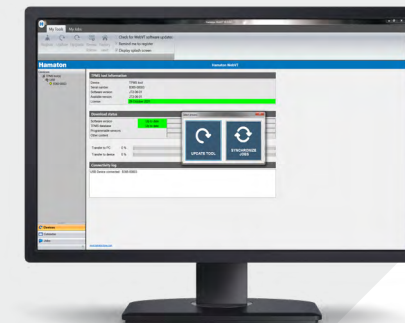


*Five years of free Hamaton-only updates will cease if you upgrade to this package.

UPDATES

Never miss out on the latest features plus increased sensor and vehicle coverage. To update your diagnostic tool, connect it to a PC (with the USB cable provided) then launch Hamaton's WebVT software.

www.hamaton-tpms.com/webvt



WEB SUPPORT

Hamaton's website, optimised for IOS and Android devices features an extensive vehicle database, which is continually kept up-to-date with industry-leading data. The **Vehicle Look-Up tool** is an essential resource for distributors and tyre bays alike. Besides identifying correct replacement parts, it details **TPMS relearn procedures** required during the sensor replacement process. Utilise these model-specific step-by-step guides to ensure the vehicle's TPMS is in good working order.

Additionally, the website's **Support** section provides valuable TPMS information and answers to **Frequently Asked Questions** whereas the **Downloads** page includes a Valve and Accessories Catalogue, Fitment Instructions, Product Comparison Charts plus much more.

Please visit www.hamaton-tpms.com



Hamaton | Innovation to Perfection



| www.hamaton-tpms.com



| info@hamaton-tpms.com